

Original Article

Pattern Lock and GPS-Based Motorcycle Security System

Rometdo Muzawi¹, Yuda Irawan², Dinul Akhiyar³, Debi Setiawan⁴

¹Faculty, Department of Information Manajemen, STMIK Amik Riau, Pekanbaru, Indonesia

²Faculty, Department of Information System, Universitas Hang Tuah Pekanbaru, Pekanbaru, Indonesia

³Faculty, Department of Information System, Universitas Putra Indonesia YPTK Padang, Padang, Indonesia

⁴Faculty, Department of Computer Science, Universitas Abdurrah, Pekanbaru, Indonesia

¹rometdomuzawi@gmail.com, ²yudairawan89@gmail.com, ³dinul_akhiyar@ymail.com,

Abstract - Motorcycles are currently widely used by the community, but it is undeniable that there are many cases of motorcycle theft as a result of users' negligence in parking their vehicles carelessly. This paper builds a motorcycle security monitoring system with the Internet of Things (IoT) capabilities using Pattern Lock, GPS Neo 6, and Raspberry Pi 3 sensors. The findings of this study show that the system works by utilizing a cross pattern, a voltage sensor took directly from the ignition of a motorcycle as a notification of the vehicle's life or death, and internet of things capabilities. Furthermore, this system has the advantage of being equipped with a GPS Neo 6 sensor, which functions to monitor the position of the motorcycle with longitude and latitude readings in the event of motorcycle movement.

Keywords – Motorcycle, Pattern Lock, GPS Neo 6, Raspberry Pi 3, IoT.

I. INTRODUCTION

Motorcycles are one of the community's modes of transportation, and they play an important role in daily life in carrying out activities [1]–[13]. According to studies, motorbikes currently account for more than 80% of all motorized vehicles in Indonesia [14]–[17]. The increasing number of cases of motor vehicle theft [3], particularly of motorcycles, necessitates the development of a solution to secure them [4],[5]. Motorcycle users' negligence in parking their vehicles in an unsafe location leads to theft, making it difficult for motorcycle owners to track down the vehicle brought by the thief [18]–[27]. Efforts must be taken to anticipate motorcycle safety, and one way is to employ or install smart car technology [6]. In the event of a motorbike movement, the design of a motorcycle security monitoring

tool employs GPS Neo 6 to calculate the distance of the vehicle when it is parked by determining the position of the location as a vehicle monitor [4],[3],[7],[8]. Using Internet of Things (IoT) technology, a Raspberry Pi 3 and Pattern Lock or a cross pattern on an Android smartphone may be used as a controller to turn on or off a motorcycle vehicle, allowing motorcycles to be monitored and controlled remotely [6],[9][10],[11]. The goal of the study is to design and build an Internet of Things-based motorbike security system that prevents the motorcycle from being started by the engine, either with the front starter or the side crank.

II. METHODOLOGY

To collect knowledge, an analytical approach is used; this technique employs an interpretive perspective [28]–[31]. Several case studies are drawn from academic papers, and the majority of these studies provide a comparative overview of the applied technology. The research method entails gathering contextual knowledge via systematic literature analysis, Software Analysis, Hardware Analysis, Block Diagram Design Concepts, and Circuit Systematic [32]–[36]. As a result, the authors decided to conduct a systematic review of the literature to develop an outline of the issues at hand.

A. Analysis Software

A software design that communicates with the hardware that has been created is referred to as a software design. A clear and systematic design flowchart is required to make IoT design easier. As a result, we'll require a flowchart. The flowchart of the designed tool is shown in Figure 1 [37]–[50].



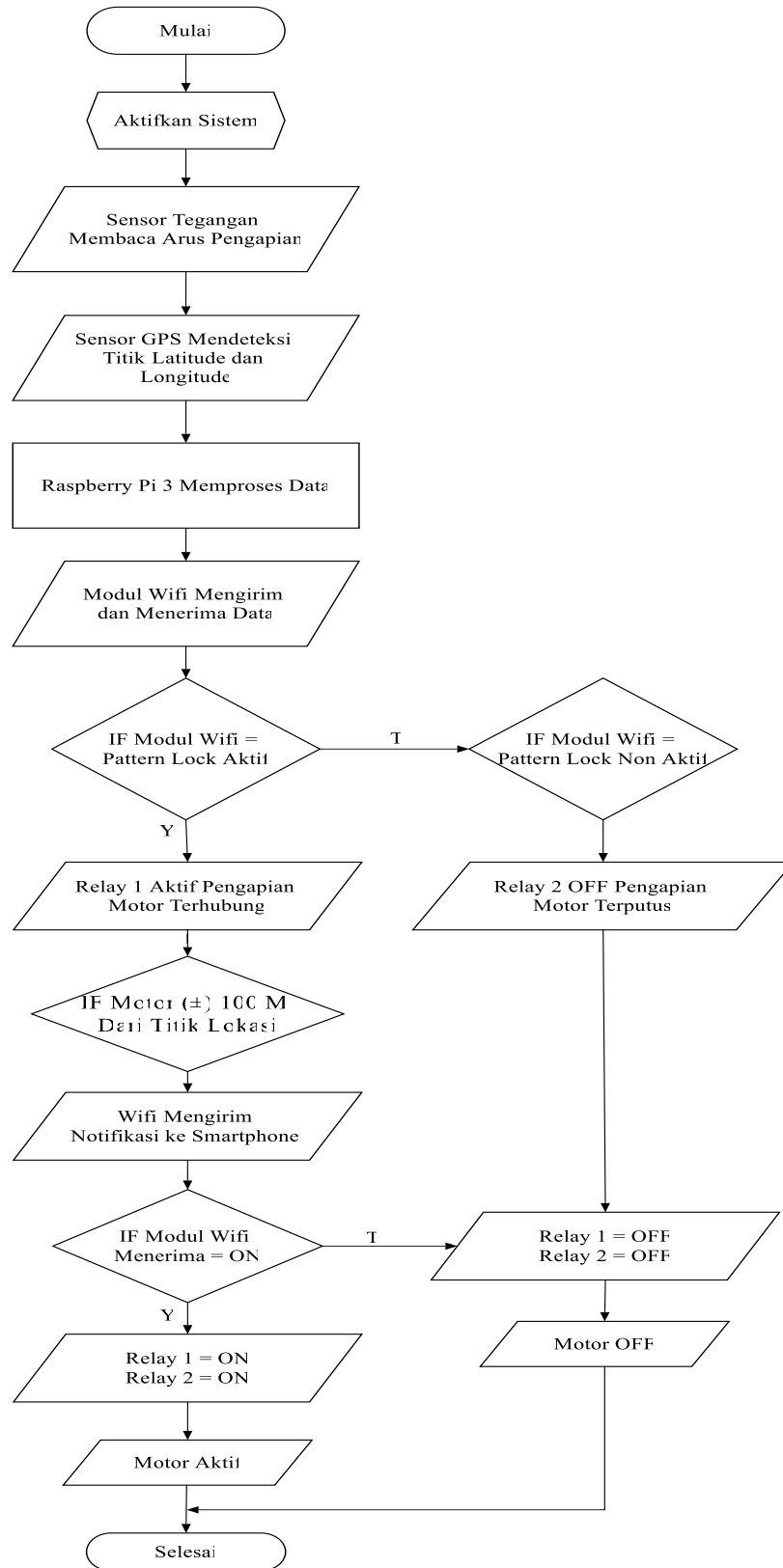


Fig. 1 Flowchart design

According to the flowchart in Figure 1, the tool's starting step involves the voltage sensor detecting the ignition current and the Neo 6 GPS sensor detecting the latitude and longitude coordinates [51]–[63]. The analog data is then transferred to the Raspberry Pi 3, where it is converted to digital data. Data is received and sent using a Wifi module or an esp8266 module. If the pattern lock is turned on, relay 1 is turned on, and the motorcycle ignition is linked; relay 2 is turned off, and the motorcycle ignition is detached [64]–[73]. The motorbike sends a notification if it moves more than 100 meters away from the location point. If the wifi module receives On, relay 1 and relay 2 will be On, and the motorcycle will be active; if the wifi module receives Off, relay 1 and relay 2 will be Off, and the motorcycle will be Off.

B. Analysis Hardware

Several hardware components are required to design a Motorcycle Security Monitoring system using Pattern Lock and the Internet of Things (IoT) Neo 6 GPS Sensor.

Table 1. Hardware

No.	Component	Function
1	Raspberry pi 3 model b	The system's primary control.
2	Atmega328p-pu	Convert to digital data
3	Gps neo 6	Data from a GPS receiver is read (latitude and longitude)
4	Relay	Connectors and circuit breakers
5	Ic 7805	Maintain voltage stability.
6	Resistor 203, Resistor 1k	Divider of voltage
8	Modul ESP 8266	Using the internet to send data to the cloud server
9	Transistor 1815	Raise the voltage.
10	Motorcycle USB charger	Raspberry Pi's current power supply.

C. Block Diagram Design Concepts

This step creates a design for a motorcycle that will be used to test the tool and make the subsequent phases easier to complete. The proposed control system's cycle diagram is shown below [74]–[83]. Figure 2 depicts the fundamental concepts of study design.

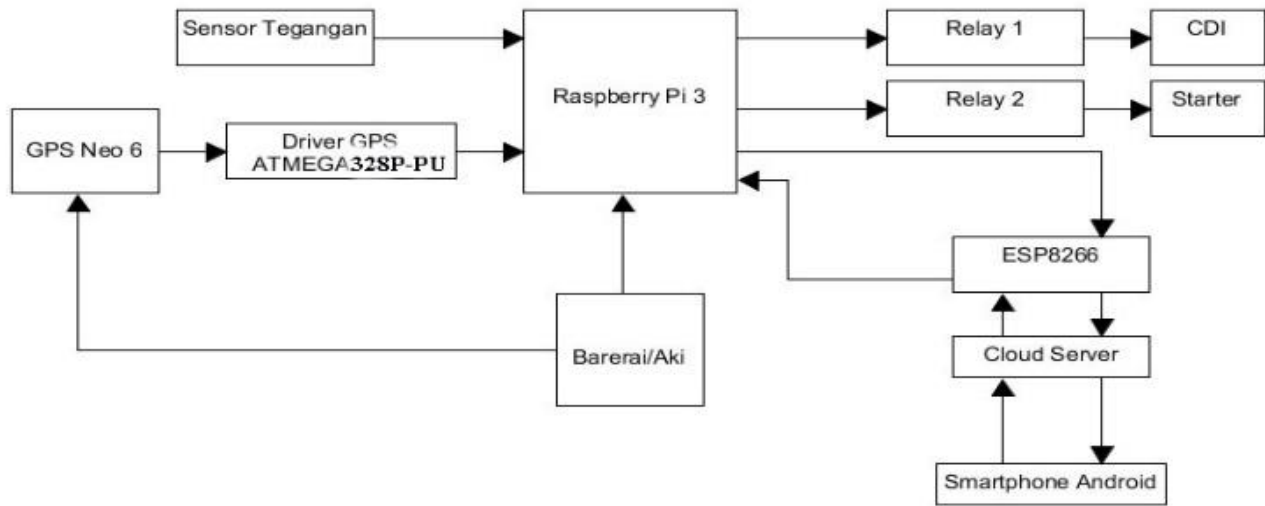


Fig. 2 Research Design Concept

The system cycle diagram in Figure 2 shows how to design a motorcycle security monitoring system using a Raspberry Pi 3 microcontroller [84], [85]. Input and output devices are connected to each pin on the microcontroller's port. The voltage sensor used to detect the ignition current on the motorcycle and the GPS Neo 6 used to identify the position with the coordinates are the input devices in this scenario. Meanwhile, the ATMEGA328P-PU collects data from the GPS Neo 6, translates it to digital data in the form of Latitude and Longitude, and sends it via serial connection to the Raspberry Pi 3 [86], [87], [96]–[100], [88]–[95].

The processed data instructs Relay 1 to disconnect and reconnect the current to the CDI, after which Relay 2 controls the current on the Starter[101],[102]. The Raspberry Pi 3's processed input can be sent to the cloud server via an internet connection (ESP8266), which can be accessed via an Android smartphone[103],[104]. The circuit breaker is controlled by an android smartphone using an internet connection to a cloud server, which then sends input commands to the microcontroller for processing[105],[106].

D. Circuit Systematic

The Raspberry Pi 3 microcontroller is used to create a series of tools for constructing a motorcycle security monitoring system. Figure 3 illustrates the circuit.

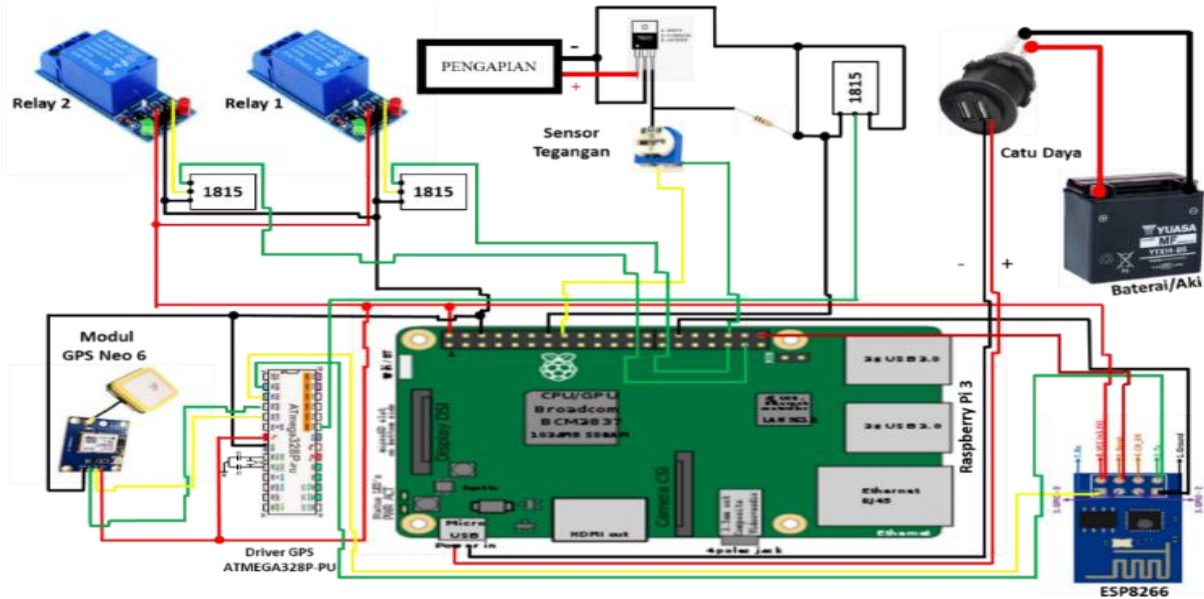


Fig. 3 Illustrates circuit

III. RESULTS AND DISCUSSION


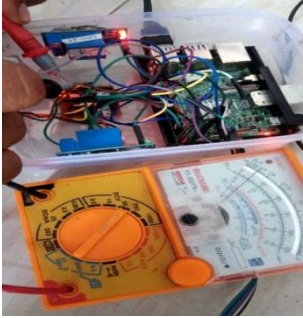
During this research, black-box testing was used. Functional requirements are the primary focus of black-box testing[107],[108]. It is possible to obtain input conditions that fully utilize all functional requirements for all programs by using black-box testing[109]. There is no way to know if a system is true or false unless it produces a certain output. The program's ability to meet user needs as well as errors can be measured from the output produced. In this system, the black box test is used to determine whether or not the input data output has been working as expected.

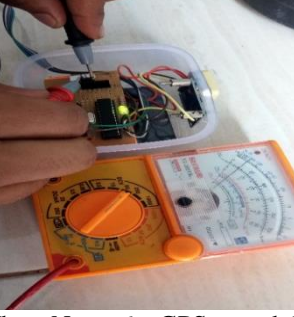
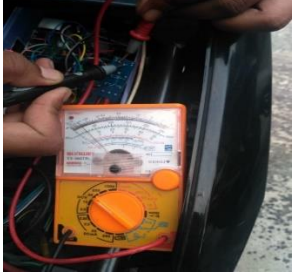
Some of the tests performed include circuit voltage testing, pattern lock testing, voltage sensor testing, testing for movement notification, relay module testing, GPS Neo sensor testing, esp 8266 module testing against the cloud server, and evaluating the test results.

A. Circuit Voltage Testing

This circuit voltage test aims to determine the incoming voltage to the circuit by the hardware or circuit specifications. An analog multimeter is used in this test to detect the voltage in the circuit. Table 2 displays the results of the tests that were performed.

Table 2. Circuit voltage testing

No.	Circuit	Voltage	Testing
1.	Voltage test on Raspberry Pi 3	5 Volt	 <p>The voltage produced by testing the voltage on the Raspberry Pi 3 with a multimeter is 5 volts.</p>
2.	Voltage test module ESP8266.	5 Volt	 <p>The voltage on the ESP8266 module provides a voltage of 5 Volts when tested using a multimeter.</p>

3.	Voltage test module GPS Neo 6	5 Volt	 <p>The Neo 6 GPS module provides a voltage of 5 Volts when tested with a multimeter.</p>
4.	Voltage test modul relay	5 Volt	 <p>The voltage on the relay module provides a voltage of 5 Volts when tested with a multimeter.</p>

B. Pattern Lock Testing

If the pattern lock is in the form of a pattern (Z), the control menu will display; if it does not match the pattern that was set, the control form will not show. The results of the tests are shown in Figure 4 below.

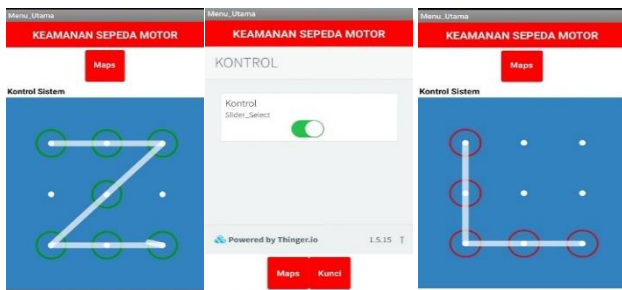


Fig. 4 Pattern Lock Testing Using the Set Pattern and Not Using the Set Pattern

C. Voltage Sensor Testing

If the voltage sensor is activated and detects voltage, it indicates that the motorcycle is operational, and the system will send a notification similar to the one shown in Figure 5 below.

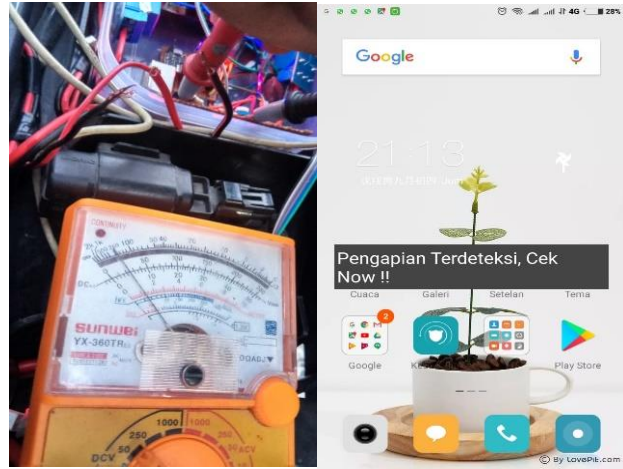
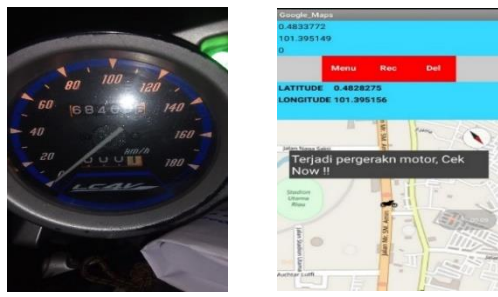
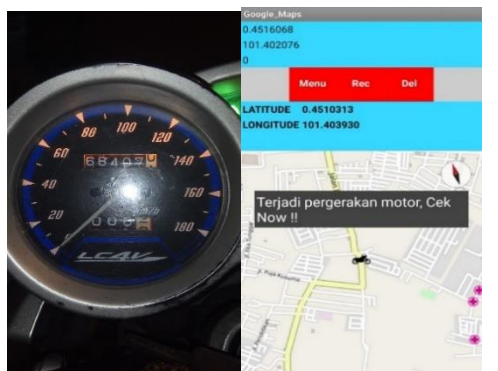


Fig. 5 Test Results for Voltage Sensors

D. Testing for Movement Notification

In this test, the system is tested with the application, and the system will notify the existence of movement based on the movement distance that has been set. To determine whether the system is functioning properly, several tests are performed to measure movement about the specified distance. Table 3 shows the test results.

Table 3. Testing for Movement Notification

Testing To	Distance measurement
1	 <p>A pedometer on a motorcycle is used to measure 100 meters.</p>
2	 <p>A pedometer on a motorcycle is used to measure 250 meters.</p>

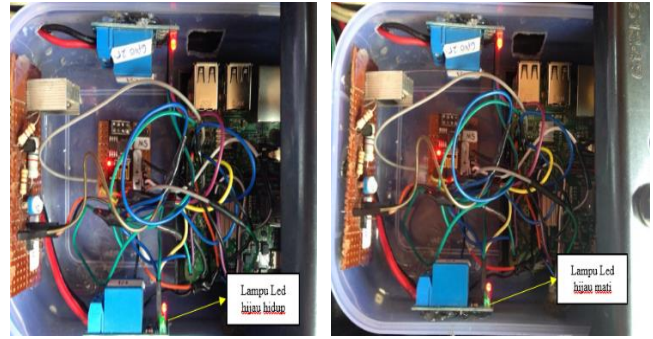
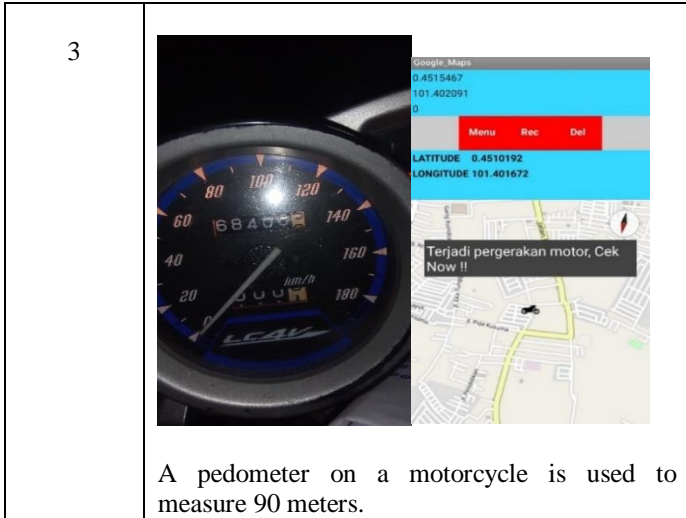


Fig. 6 Conditions of ignition on and off on the relay

E. Relay Module Testing

Connecting the CDI ignition and the Dynamo Starter current of the motorcycle is a condition where the position of the NC (Normally Closed) contact on the relay is shown in Figure 6 below if Relays 1 and 2 are ON or active.

F. Gps Neo Sensor Testing

The GPS accuracy test is carried out by comparing it to Google Maps, which results in the motorcycle's placement point being aligned with the Google Maps program. Table 4 below summarizes the findings of the tests that were conducted.

Table 4. Gps Neo Sensor Testing

Testing To	Location	Application Maps	Google Maps	Proof
1	West Sidomulyo, Jl. Trinity No. 9 Pekanbaru City, Riau 28289.			
2	West Sidomulyo, Pekanbaru City, Riau Islands 28294 Jl. Purwodadi Indah KM.10			
3	New Handsome Pekanbaru City Riau 28292 Jl. Naga Sakti Simpang			

G. Esp 8266 Module Testing Against The Cloud Server

Figure 7 shows a connection test between the ESP8266 module and the Cloud Server. If the connection is established, the Online status and graph will turn blue, indicating that the connection is established; if the graph does not appear, the ESP8266 Module connection to the Cloud Server is not established.

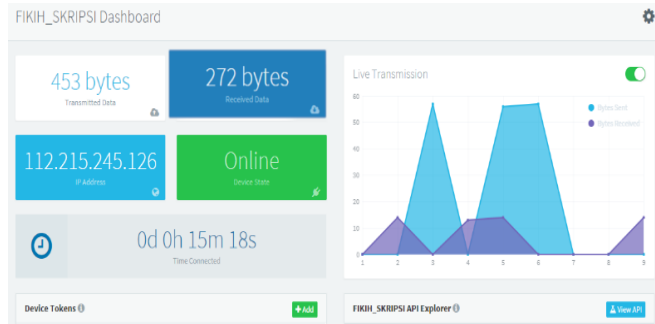


Fig. 7 ESP8266 Module Connection Test to Cloud Server

H. Evaluating Test Results

After all of the testing has been completed, an evaluation is required. The findings of the overall test evaluation are presented in Table 5.

Table 5. Gps Neo Sensor Testing

No.	Testing Expectations	Status of Testing	
		Succeed	Failed
1.	A voltage of 5 volts is applied to the circuit.	✓	-
2.	A voltage of 5 volts is applied to the circuit.	✓	-
3.	A voltage of 5 volts is applied to the circuit.	✓	-
4.	A voltage of 5 volts is applied to the circuit.	✓	-
5.	Pattern Lock is a feature that allows you to access the control form using a predetermined pattern.	✓	-
6.	If the motorcycle is running, the voltage sensor can detect the voltage on the ignition.	✓	-
7.	Notifications can be sent if the motorcycle shifts.	✓	-
9.	Based on the longitude and latitude of the motorcycle's position, the Neo 6 GPS sensor can detect the location.	✓	-

V. CONCLUSION

In this paper, we present a motorcycle safety monitoring system based on the Internet of Things that can control ignition and monitor motorcycles from a distance. The voltage sensor connected to the microcontroller circuit can detect motorcycle voltage, and the installed Neo 6 GPS module will send Longitude and Latitude in real-time on the android smartphone application that produces maps of location points so that it will send notifications if there is movement on the motorcycle. For future work, the author suggests adding an application interface to the settings menu to change the pattern lock pattern. On the other hand, a camera must be included in the hardware design to identify motorcycle users (motorcycle thieves), with the goal of the system being able to connect to emergency numbers such as the police call center number so that when a motorcycle is stolen, the system can send location point information and pictures of the thief. We believe that with more hardware supporting system design, this research will provide a more accurate security monitoring system. As a result, it will have numerous advantages in people's lives.

REFERENCES

- [1] I. Iswanto, N. Maharani, A. Maarif, G. Supangkat, and A. Pandey, Empowerment of Mosque Communities to Increase Body Immune with Aromatherapy Robots, J. Pengabd. Dan Pemberdaya. Masy. Indones. 1(4) 127–135 (2021).
- [2] I. Iswanto, N. Maharani, A. Maarif, and M. Abdus, Empowerment of Mushroom Farming Communities with Iot- Based Monitoring in Karang Kepanjen, Sleman, J. Pengabd. Dan Pemberdaya. Masy. Indones. 1(5) (2021) 198–208.
- [3] A. Nurjanah, I. Suwarno, M. Ahmad, and N. Maharani, Dissemination of Disaster Communication Technology through a Slidslide Early Detection Tools in Sonyo Hamlet, Jatimulyo Village, Kulon Progo District, J. Pengabd. Dan Pemberdaya. Masy. Indones. 1(8) (2021) 339–348.
- [4] W. Widiasmoro, I. Suwarno, I. Surahmat, T. A. Nugraha, and I. Al_barazanchi, Dissemination of Technology Utilization of FM Community Radio as a Means to Support Teaching-Learning Activities for Students During the Covid-19 Pandemic at Muhammadiyah Elementary School Tlogolelo, Hargomulyo, Kokap District, Kulon Progo, DIY, J. Pengabd. Dan Pemberdaya. Masy. Indones. 2(1) (2022) 34–42.
- [5] R. A. Anugrah et al., Application of Coconut Paper Motor Speed Control Technology for Increasing Coconut Liquid Organic Fertilizer Productivity, J. Pengabd. Dan Pemberdaya. Masy. Indones. 2(2) (2022) 74–83.
- [6] Iswanto et al., Artaka Fish Farm Community Empowerment in Karang Kepanjen Village, Trimulyo, Sleman, Sleman Regency, J. Pengabd. Dan Pemberdaya. Masy. Indones. 1(2) (2021) 75–83.
- [7] I. Iswanto, A. Maselena, N. Maharani, A. Maarif, and M. H. Zulfiar, Empowerment of Energy Communities in Minggir II Village Yogyakarta with Iot-Based Biodigester, J. Pengabd. Dan Pemberdaya. Masy. Indones. 1(6) (2021) 241–248.
- [8] Iswanto, N. M. Raharja, I. Prasojo, and O. Tanane, Empowerment of MSMEs During the Covid-19 Pandemic with Information Technology, J. Pengabd. Dan Pemberdaya. Masy. Indones. 1(1) (2021) 1–8.
- [9] I. Iswanto, N. Maharani, A. Ma, A. Adiningrat, A. Nurjanah, and D. Uddin, Empowerment of Mosque Community with Ultraviolet Light Sterilisator Robot, J. Pengabd. Dan Pemberdaya. Masy. Indones. 1(3) (2021) 95–102.

- [10] I. Suwarno, M. Ahmad, I. Ahmad, and E. L. Rimban, Desimination of Technology Application of Blood Flow Current Technology in Puskesmas, J. Pengabd. Dan Pemberdaya. Masy. Indones. 1(10) (2021) 431–436.
- [11] I. Suwarno, R. Rahim, M. Aljanabi, M. Ahmad, and O. Tanane, Empowerment of MSMES by Optimizing Marketing of Local Products in Muntuk Hamlet with Digital Marketing, J. Pengabd. Dan Pemberdaya. Masy. Indones. 1(10) (2021) 423–430.
- [12] I. Suwarno, R. Rahim, M. Aljanabi, M. Ahmad, and O. Tanane, Education of MSMES in the Order of Improving Product Sales by using Digital Media in the Middle of the Covid-19 Pandemic, J. Pengabd. dan Pemberdaya. Masy. Indones. 1(9) (2021) 379–388.
- [13] I. Suwarno, N. Maharani, D. Uddin, and R. Andri, Technology Dissemination of Smart Tani Fish Farmers in Karang Kepanjen Hamlet, Trimulyo Village, Sleman District, Sleman Regency, J. Pengabd. Dan Pemberdaya. Masy. Indones. 1(7) (2021) 293–302.
- [14] N. M. Raharja, Iswanto, O. Wahyunggoro, and A. I. Cahyadi, Altitude Control for Quadrotor with Mamdani Fuzzy Model, in Proceedings - 2015 International Conference on Science in Information Technology: Big Data Spectrum for Future Information Economy, ICSITech 2015. (2016) 309–314.
- [15] Iswanto and A. Ma'arif, Robust Integral State Feedback Using Coefficient Diagram in Magnetic Levitation System, IEEE Access. 8 (2020) 57003–57011.
- [16] Iswanto, P. G. Prayitno, I. Permana, H. Widada, and Widyasmoro, Wifi-Based Alcohol Monitoring and Detection, J. Adv. Res. Dyn. Control Syst. 11(8) (2019) 1966–1972.
- [17] I. Iswanto, M. Ilayaraja, K. Shankar, P. T. Nguyen, and S. Abadi, Challenges of Medical Text and Image Processing, Int. J. Eng. Adv. Technol. 8(6) (2019) 969–973.
- [18] H. Suwoyo, C. Deng, Y. Tian, and A. Adriansyah, Improving a Wall-Following Robot Performance with a PID-Genetic Algorithm Controller, Int. Conf. Electr. Eng. Comput. Sci. Informatics. (2018) 314–318.
- [19] A. Puscasiu, S. Folea, H. Valean, A. Franca, and T. Stanislav, Monitoring the On-Site Contribution to the Greenhouse Effect by Distributed Measurement of Carbon Dioxide, in 2017 18th International Carpathian Control Conference (ICCC). (2017) 40–45.
- [20] T. Pellis et al., Off-Patient Assessment of Pre-Cordial Impact Mechanics Among Medical Professionals in North-East Italy Involved in Emergency Cardiac Resuscitation, Prog. Biophys. Mol. Biol. 110(2–3) (2012) 390–396.
- [21] T. Klingberg and M. Schilling, Mobile Wearable Device for Long Term Monitoring of Vital Signs, Comput. Methods Programs Biomed. 106(2) 89–96 (2012).
- [22] S. Yin et al., A 1.06- μ W Smart ECG Processor in 65-nm CMOS for Real-Time Biometric Authentication and Personal Cardiac Monitoring, IEEE J. Solid-State Circuits. 54(8) (2019) 2316–2326.
- [23] H. De Clercq and R. Puers, A Neonatal Body Sensor Network for Long-Term Vital Signs Acquisition, Procedia Eng. 47 (2012) 981–984.
- [24] H. Yuliandoko, Subono, V. A. Wardhany, S. H. Pramono, and P. Siwindarto, Design of Flooding Detection System Based on Velocity and Water Level DAM With ESP8266, in 2017 2nd International Conferences on Information Technology, Information Systems and Electrical Engineering (ICITISEE). 2018 (2017) 396–401.
- [25] R. Gupta, J. Bera, and M. Mitra, A Bi-Phase Enabled Serial Acquisition System for Remote Processing of Digitized ECG, Comput. Electr. Eng. 38(1) (2012) 68–74.
- [26] H. F. Rezaei, N. Sitter, and A. Kruger, Next-Generation System for Real-Time Monitoring of Rainfall, Soil Moisture, and Soil Temperature, in 2011 IEEE Sensors Applications Symposium. (2011) 70–75.
- [27] Y. Wang, X. Zhang, and D. Xu, Electronic Ballast for 119W UV Lamp Controlled by Microprocessor, in 2009 IEEE Industry Applications Society Annual Meeting. (2009) 1–5.
- [28] I. Suwarno, W. A. Oktaviani, Y. Apriani, D. U. Rijalusalam, and A. Pandey, Potential Force Algorithm with Kinematic Control as Path Planning for Disinfection Robot, J. Robot. Control. 3(1) (2022) 107–114.
- [29] I. Iswanto and I. Ahmad, Second-Order Integral Fuzzy Logic Control Based Rocket Tracking Control, J. Robot. Control. 2(6) (2021) 594–604.
- [30] D. U. Rijalusalam and I. Iswanto, Implementation Kinematics Modeling and Odometry of Four Omni Wheel Mobile Robot on the Trajectory Planning and Motion Control Based Microcontroller, J. Robot. Control. 2(5) (2021) 448–455.
- [31] R. I. Alfian, A. Ma'arif, and S. Sunardi, Noise Reduction in the Accelerometer and Gyroscope Sensor with the Kalman Filter Algorithm, J. Robot. Control. 2(3) (2021) 180–189.
- [32] Iswanto, O. Wahyunggoro, and A. I. Cahyadi, “Path planning based on fuzzy decision trees and potential field, Int. J. Electr. Comput. Eng. 6(1) (2016) 212–222.
- [33] Iswanto, N. Prasetyoningsih, Gendroyono, G. Nugroho, and M. E. Sulisty, Building the Village of People Become a Healthy and Productive Community, Int. J. Innov. Technol. Explor. Eng. 9(1) (2019) 2861–2865.
- [34] I. Iswanto, W. Setiawan, E. Laxmi Lydia, K. Shankar, and P. T. Nguyen, Machine Learning for Healthcare, Int. J. Eng. Adv. Technol. 8(6) (2019) 954–959.
- [35] N. M. Raharja, E. Firmansyah, A. I. Cahyadi, and Iswanto, Hovering Control of Quadrotor Based on Fuzzy Logic, Int. J. Power Electron. Drive Syst. 8(1) (2017) 492–504.
- [36] T. P. Tunggal, A. Supriyanto, R. Nur Mukhammad Zaidatur, I. Faishal, I. Pambudi, and T. Iswanto, Pursuit Algorithm for Robot Trash Can Based on Fuzzy-Cell Decomposition, Int. J. Electr. Comput. Eng. 6(6) (2016) 2863–2869.
- [37] H. Lim, J. Park, D. Lee, and H. J. Kim, Build Your Quadrotor: Open-Source Projects on Unmanned Aerial Vehicles, IEEE Robot. Autom. Mag. 19(3) (2012) 33–45.
- [38] P. Pandey and R. Litoriya, Elderly Care Through Unusual Behavior Detection: A Disaster Management Approach Using Iot and Intelligence, IBM J. Res. Dev. 64(1/2) (2020) 15:1-15:11.
- [39] Irawan, Yuda, et al., Intelligent Quality Control of Shrimp Aquaculture Based on Real-Time System and IoT Using Mobile Device, International Journal of Engineering Trends and Technology. 69(4) (2021) 49-56.
- [40] D. Brunelli, A. M. Tadesse, B. Vodermayr, M. Nowak, and C. Castellini, Low-Cost Wearable Multichannel Surface EMG Acquisition for Prosthetic Hand Control, Proc. - 2015 6th IEEE Int. Work. Adv. Sensors Interfaces, IWASI 2015. (2015) 94–99.
- [41] A. Saxena and A. Saxena, A New Generation Grid Solver Robot System for Object Picking Using Shortest Path, in 2012 International Conference on Emerging Trends in Electrical Engineering and Energy Management (ICETEEEM). (2012) 445–450.
- [42] N. Bezanic and I. Popovic, Service-Oriented Sensor Network for Environmental Monitoring. (2013) 1544–1547.
- [43] Yuda Irawan, Hendry Fonda, Yulisman, Mardeni, Garbage Collecting Ship Robot Using Arduino Uno Microcontroller Based on Android Smartphone International Journal of Engineering Trends and Technology. 69(6) 25-30.
- [44] Y. Mulgaonkar, G. Cross, and V. Kumar, Design of Small, Safe and Robust Quadrotor Swarms. (2015) 2208–2215.
- [45] R. Aarathi, R. B. Kumar, T. Ravichandran, and S. Giridharan, A Smart Hydro Electric Generator in Home Based on IOT, in 2019 5th International Conference on Advanced Computing & Communication Systems (ICACCS). (2019) 1036–1038.
- [46] J. H. Perez, Neural Control for Synchronization of a Chaotic Chua-Chen System, IEEE Lat. Am. Trans. 14(8) (2016) 3560–3568.
- [47] S. Hegde, H. Mekali, and G. Varaprasad, Pothole Detection and Inter-Vehicular Communication, 2014 IEEE Int. Conf. Veh. Electron. Safety, ICVES 2014. (2014) 84–87.
- [48] V. Ghadiok, J. Goldin, and W. Ren, Autonomous Indoor Aerial Gripping Using a Quadrotor, in 2011 IEEE/RSJ International Conference on Intelligent Robots and Systems. 27(6) (2011) 4645–4651.
- [49] K. Sukvichai and M. Parnichkun, Double-Level Ball-Riding Robot Balancing: from System Design, Modeling, Controller Synthesis, to Performance Evaluation, Mechatronics. 24(5) (2014) 519–532.

- [50] R. Dharmambal and S. D. Joshi, MPPT Based Power Control of Resonant Converter Applied to Induction Cooktops, in 2016 International Conference on Advanced Communication Control and Computing Technologies (ICACCT). 978 (2016) 477–482.
- [51] R. Alayi, H. Harasii, and H. Pourderogar, Modeling and Optimization of Photovoltaic Cells with GA Algorithm, *J. Robot. Control.* 2(1) (2021) 35–41.
- [52] M. Samuel, M. Mohamad, M. Hussein, and S. M. Saad, Lane Keeping Maneuvers Using Proportional Integral Derivative (PID) and Model Predictive Control (MPC), *J. Robot. Control.* 2(2) (2021) 78–82.
- [53] A. N. Ogbolu and S. Sukidjo, Artificial Intelligence vs My Future Job: Perceptions of Asian Undergraduates, *J. Robot. Control.* 1(6) (2020) 208–212.
- [54] S. Sahloul, D. B. H. Abid, and C. REKIK, A Hybridization of Global-Local Methods for Autonomous Mobile Robot Navigation in Partially-Known Environments, *J. Robot. Control.* 2(4) (2021) 221–233.
- [55] M. Khalifa, A. H. Amhedb, and M. Al Sharqawi, Position Control of Real-Time DC Motor Using LabVIEW, *J. Robot. Control.* 2(5) (2021) 342–348.
- [56] A. Hassan et al., A Wirelessly Controlled Robot-Based Smart Irrigation System by Exploiting Arduino, *J. Robot. Control.* 2(1) (2021) 29–34.
- [57] R. Ramadhani, E-Marketing of Village Tourism Development Strategy (Case Study in the Tourist Village Puncak Sosok), *J. Robot. Control.* 2(2) (2021) 72–77.
- [58] B. Alfaresi, T. Barlian, F. Ardianto, and M. Hurairah, Path Loss Propagation Evaluation and Modelling Based ECC-Model in Lowland Area on 1800 MHz Frequency, *J. Robot. Control.* 1(5) (2020) 167–172.
- [59] S. Ashraf, A. Raza, Z. Aslam, H. Naeem, and T. Ahmed, Underwater Resurrection Routing Synergy using Astucious Energy Pods, *J. Robot. Control.* 1(5) (2020) 173–184.
- [60] S. P. Humaira, I. Nursupriah, and D. Darwan, Forecasting of the Number of Schizophrenia Disorder by using the Box-Jenkins of Time Series Analysis, *J. Robot. Control.* 1(6) (2020) 213–219.
- [61] M. A. Márquez-Vera, O. López-Ortega, L. E. Ramos-Velasco, A. Rodríguez-Romero, J. C. Ramos-Fernández, and J. A. Hernández-Salazar, Adaptive Threshold PCA for Fault Detection and Isolation, *J. Robot. Control.* 2(3) (2021) 119–125.
- [62] T. A. Assegie, An Optimized K-Nearest Neighbor Based Breast Cancer Detection, *J. Robot. Control.* 2(3) (2021) 115–118.
- [63] I. Ahmad, M. S. Niazy, R. A. Ziar, and S. Khan, Survey on IoT: Security Threats and Applications, *J. Robot. Control.* 2(1) (2021) 42–46.
- [64] X. Yu, P. Wu, W. Han, and Z. Zhang, A Survey on Wireless Sensor Network Infrastructure for Agriculture, *Comput. Stand. Interfaces.* 35(1) (2013) 59–64.
- [65] S. Gupte, P. I. T. Mohandas, and J. M. Conrad, A Survey of Quadrotor Unmanned Aerial Vehicles, *Conf. Proc. - IEEE SOUTHEASTCON.* (2012).
- [66] T. Wadghule and V. R. Aranke, Efficiency Improvement of the Photovoltaic Panel by Tracking Method, in 2016 International Conference on Electrical, Electronics, and Optimization Techniques (ICEEOT). (2016) 2996–3001.
- [67] M. E. E. Alahi, L. Xie, S. Mukhopadhyay, and L. Burkitt, A Temperature Compensated Smart Nitrate-Sensor for Agricultural Industry, *IEEE Trans. Ind. Electron.* 64(9) (2017) 7333–7341.
- [68] T. J. Alexander, An Implementation of Mobile Control Room Environment in the Android Platform for Industrial Applications, *IEEE Int. Conf. Circuit, Power Comput. Technol. ICCPCT 2015.* (2015).
- [69] E. Subin, S. Renuka, K. Chaitanya, and A. Sudheer, Implementation of Signal Processing Filters for Portable ECG Devices Using Android Mobile Phone and Bluetooth, in 2017 14th IEEE India Council International Conference (INDICON). (2017) 1–5.
- [70] M. Prabakaran, A. P. Kumar, and R. Hariharan, Hybrid H-6 Inverter Coupled Automatic Dual-Axis Solar Tracking System, In 2016 International Conference on Electrical, Electronics, and Optimization Techniques (ICEEOT). (2016) 4722–4731.
- [71] L. Manzari, H. Mao, P. Göransson, J. Cuenca, and I. L. Arteaga, A Method for the Observation of the Anelastic Behavior of Anisotropic Porous Materials using Digital Image Correlation, *J. Sound Vib.* 474 (2020) 115244.
- [72] Irawan, Yuda, Novrianto, Andre Wahyu, Sallam, Hafizh, Cigarette Smoke Detection and Cleaner Based on Internet of Things (IoT) Using Arduino Microcontroller and MQ-2 Sensor, *Journal of Applied Engineering and Technological Science (JAETS).* 2(2) (2021) 85-93.
- [73] Susilo, Jenli, et al., Car Parking Distance Controller using Ultrasonic Sensors Based on Arduino Uno. *Journal of Robotics and Control (JRC).* 2(5) (2021) 353-356.
- [74] Wahyuni, Refni, et al., Water Level Control Monitoring Based on Arduino Uno R3 Atmega 238p using LM016I LCD at STMIK Hang Tuah Pekanbaru, *Journal of Robotics and Control (JRC).* 2(4) (2021) 265-269.
- [75] Iswanto, O. Wahyunggoro, and A. I. Cahyadi, Path Planning of Decentralized Multi-Quadrotor Based on Fuzzy-Cell Decomposition Algorithm, in *AIP Conference Proceedings.* 1831 (2017).
- [76] R. Mubarak, D. V. Firmansyah, D. Haryanto, N. P. Apriyanto, U. Mahmudah, and I. Iswanto, Motorcycle-Security Using Position Searching Algorithm Based on Hybrid Fuzzy-Dijkstra, *Indones. J. Electr. Eng. Comput. Sci.* 3(2) (2016) 468–474.
- [77] Iswanto, J. Syafriadi, A. N. N. Chamim, R. O. Wiyagi, and R. Syahputra, LED and Servo Motor Control Via Bluetooth Based on Android Applications, *Int. J. Recent Technol. Eng.* 8(2) (2019) 6227–6231.
- [78] A. Ma'Arif, H. Nabila, Iswanto, and O. Wahyunggoro, Application of Intelligent Search Algorithms in Proportional-Integral-Derivative Control of Direct-Current Motor System, in *Journal of Physics: Conference Series.* 1373(1) (2019).
- [79] Purwanti, Siti, et al., Temperature Monitoring System for Egg Incubators Using Raspberry Pi3 Based on Internet of Things (IoT), *Journal of Robotics and Control (JRC).* 2(5) (2021) 349-352.
- [80] Iswanto, P. Megantoro, and E. P. F. Dewi, Ph Meter Based Raspberry Pi and User Interface using Python, *Int. J. Innov. Technol. Explor. Eng.* 9(1) (2019) 1334–1338.
- [81] Iswanto and N. Maharani Raharja, Standard Distance Detector Tool for TV users Based on Fuzzy Decision Tree, *IOP Conf. Ser. Mater. Sci. Eng.* 851(1) (2020) 012026.
- [82] D. A. Prasetya, P. T. Nguyen, R. Faizullin, I. Iswanto, and E. F. Army, Resolving the Shortest Path Problem using the Haversine Algorithm, *J. Crit. Rev.* 7(1) (2020) 62–64.
- [83] Triwiyanto, B. G. Iranto, I. Dewa Gede Hari Wisana, H. G. Ariswati, M. P. A. T. Putra, and I. Iswanto, A Modeling of Extended Kalman Filter to Improve Accuracy in Elbow Joint Angle Estimation, *J. Crit. Rev.* 7(12) (2020) 886–892.
- [84] Iswanto, A. Nurjanah, I. Prasojo, F. Anindiyahadi, and N. M. N. M. Raharja, Application of Nurse Calling Device at Sewon 1 Health Cente, *Int. J. Innov. Technol. Explor. Eng.* 8(11) (2019) 2721–2723.
- [85] I. Iswanto et al., Feature Extraction and Application of Bio-Signal, *Int. J. Eng. Adv. Technol.* 8(6)(2) (2019) 960–964.
- [86] Y. Zhao, L. Fu, and L. Wang, Design of PM2.5 Monitoring System Under the Human Micro-Environment, in 2018 IEEE 27th International Symposium on Industrial Electronics (ISIE). 2018 (2018) 218–223.
- [87] Irawan, Yuda, Wahyuni, Refni, Electronic Equipment Control System for Households by using Android Based on Iot (Internet Of Things), In: *Journal of Physics: Conference Series, Iop Publishing.* (2021) 012094.
- [88] K. Niles, J. Ray, K. Niles, A. Maxwell, and A. Netchaev, Monitoring for Analytes through LoRa and LoRaWAN Technology, *Procedia Comput. Sci.* 185 (2021) 152–159.
- [89] R. Yildiz, M. Barut, and E. Zerdali, A Comprehensive Comparison of Extended and Unscented Kalman Filters for Speed-Sensorless Control Applications of Induction Motors, *IEEE Trans. Ind. Informatics.* 16(10) (2020) 6423–6432.

- [90] Rahmalisa, Uci, Febriani, Anita, Irawan, Yuda, Detector Leakage Gas LPG Based on Telegram Notification using Wemos D1 and Mq-6 Sensor, *Journal of Robotics and Control (JRC)*. 2(4) (2021) 287-291.
- [91] T. Dietzen, S. Doclo, M. Moonen, and T. van Waterschoot, Integrated Sidelobe Cancellation and Linear Prediction Kalman Filter for Joint Multi-Microphone Speech Dereverberation, Interfering Speech Cancellation, and Noise Reduction, *IEEE/ACM Trans. Audio, Speech, Lang. Process.* 28(c) (2020) 740–754.
- [92] Irawan, Yuda, et al., Real-Time System Monitoring and Analysis-Based Internet of Things (IoT) Technology in Measuring Outdoor Air Quality, *International Journal of Interactive Mobile Technologies*. 15(10) (2021).
- [93] D. Feng, C. Wang, C. He, Y. Zhuang, and X.-G. Xia, Kalman-Filter-Based Integration of IMU and UWB for High-Accuracy Indoor Positioning and Navigation, *IEEE Internet Things J.* 7(4) (2020) 3133–3146.
- [94] S. J. Alam and S. R. Arya, Control of UPQC Based on Steady-State Linear Kalman Filter for Compensation of Power Quality Problems, *Chinese J. Electr. Eng.* 6(2) (2020) 52–65.
- [95] J. Wang, Y. Qian, F. Li, J. Liang, and W. Ding, Fusing Fuzzy Monotonic Decision Trees, *IEEE Trans. Fuzzy Syst.* 28(5) (2020) 887–900.
- [96] Devis, Yesica, et al., Monitoring System of Heart Rate, Temperature, and Infusion in Patients Based on Microcontroller (Arduino Uno). In: *Journal of Physics: Conference Series*. IOP Publishing. (2021) 012069.
- [97] K. W. Gunawan, N. Halimawan, and Suharjito, Lightweight End to End Pose-Robust Face Recognition System with Deep Residual Equivariant Mapping, *Procedia Comput. Sci.* 179(2020) (2021) 648–655.
- [98] J. S. Nayak and M. Indiramma, An Approach To Enhance Age Invariant Face Recognition Performance Based on Gender Classification, *J. King Saud Univ. - Comput. Inf. Sci.* xxxx (2021).
- [99] A. B. Shetty, Bhoomika, Deeksha, J. Rebeiro, and Ramyashree, Facial Recognition using Haar Cascade and LBP Classifiers, *Glob. Transitions Proc.* (2021) 0–12.
- [100] Wahyuni, Refni, et al., Home Security Alarm Using Wemos D1 and HC-SR501 Sensor-Based Telegram Notification, *Journal of Robotics and Control (JRC)*. 2(3) (2021) 200-204.
- [101] Irawan, Yuda, et al., Voice-Based Home Security and SMS Gateway Using Arduino Uno Microcontroller and Passive Infra-Red Sensor, *Journal of Applied Engineering and Technological Science (JAETS)*. 3(1) (2021) 19-25.
- [102] H. D. Hesar and M. Mohebbi, An Adaptive Kalman Filter Bank for ECG Denoising, *IEEE J. Biomed. Heal. Informatics*. 25(1) (2021) 13–21.
- [103] Perkasa, Reza, et al., Light Control Using Human Body Temperature Based on Arduino UNO And PIR (Passive Infrared Receiver) Sensor, *Journal of Robotics and Control (JRC)*. 2(4) (2021) 307-310.
- [104] Z. Patel and E. Boje, A Hybrid, Coupled Approach to the Continuous-Discrete Kalman Filter, *IEEE Control Syst. Lett.* 5(3) (2021) 827–832.
- [105] Irawan, Yuda, Moving Load Robot Using Wifi Network and Android Based, *Journal of Robotics and Control (JRC)*. 2(3) (2021) 217-220.
- [106] D. Sun, X. Li, Z. Cao, J. Yong, D. Zhang, and J. Zhuang, Acoustic Robust Velocity Measurement Algorithm Based on Variational Bayes Adaptive Kalman Filter, *IEEE J. Ocean. Eng.* 46(1) (2021) 183–194.
- [107] X. Li and R. Kennel, General Formulation of Kalman-Filter-Based Online Parameter Identification Methods for VSI-Fed PMSM, *IEEE Trans. Ind. Electron.* 68(4) (2021) 2856–2864.
- [108] Irawan, Yuda, Fernando, Yuniar, Wahyuni, Refni, Detecting Heart Rate Using Pulse Sensor as Alternative Knowing Heart Condition, *Journal of Applied Engineering and Technological Science (JAETS)*. 1(1) (2019) 30-42.
- [109] C. Shen et al., Seamless GPS/Inertial Navigation System Based on Self-Learning Square-Root Cubature Kalman Filter, *IEEE Trans. Ind. Electron.* 68(1) (2021) 499–508.