

A Hybrid Method For Enhancement Of MRI Knee Images

U.Pavan Kumar^{#1}, P.Padmaja^{*2}

Assistant Professor,
Department of ECE,

Sri Vidyanikethan Engineering College, Tirupati, India.

Abstract— Pre-processing is the basic step to reconstruct the image with some useful feature. This technique is essential for the enhancement of knee images which increases the efficiency of the subsequent tasks of the knee recognition system. In this paper, an hybrid approach is proposed which is a combination of contrast stretching and adaptive thresholding that simultaneously adjusts the intensity level of knee images using boundaries is developed. The validation of proposed system is carried out based on the defined parameter matrices. The experimental results shows that the proposed method proves efficient when compared to other traditional methods.

Keywords— Image enhancement, Histogram equalization, Contrast stretching, intensity adjustment, Adaptive Thresholding.

I. INTRODUCTION

The application of digital image processing techniques for the problem of automatic knee classification began two decades ago and it has since been proceeding in earnest. In industrial this technology found some of its earlier applications to be widely used. Image sequence processing techniques are used to solve problems in Medical field. In recent times computer vision methodologies and pattern recognition techniques have been applied towards automated procedures of knee recognition [2,3]. It helps in the development of an automatic method that can correctly discriminate and recognize knee shapes of different species. These applications require high accuracy for the estimation of dynamic changes. Automatic classification and recognition system for knee is essential and useful since it can facilitate fast learning of MRI knee [4,7]. Knee images normally changes to blurred images by the presence of noise, low or high contrast both in the edge area and image area. Preprocessing an image include, removal of noise, edge or boundary enhancement, automatic edge detection, automatic contrast adjustment and segmentation. As multiple noise damages the quality of nature images, improved enhancement technique is required for improving the contrast stretch in knee images. Mostly the images in natural surface posses low contrast as the features have a low range of reflectance in any waveband which effects the further development process. Generally the method includes the

following steps: preprocessing, feature extraction, classification and recognition. However, blurriness and presence of unwanted noise on knee images result in false classification. Thus image pre-processing such as image enhancement techniques are highly needed to improve the quality of knee image.

Image enhancement is basically improving the interpretability or perception of information in images for human viewers and providing 'better' input for other automated image processing techniques [1,5]. During this process, one or more attributes of the image are modified. The choice of attributes and the way they are modified are specific to a given task. Image enhancement techniques are used to highlight certain features (i) increasing the contrast, (ii) changing the brightness level of an image so that the image looks better. In this paper, a hybrid approach [12] that simultaneously removes noise, adjusts contrast and enhances boundaries is presented.

The paper is organized as follows, Section 2 of the paper introduces the concept of traditional enhancement techniques which improves the pixel intensities. Section 3 explains the working of contrast stretching and adaptive threshold method. The proposed hybrid model for improving the pixel intensities and improve the quality of blur is explained in section 4. Section 5 discusses the experimentation, their performance measurement and results. Finally, the conclusions and references are discussed in section 6.

II. ENHANCEMENT TECHNIQUES

Image enhancement processes consist of a collection of techniques that seek to improve the visual appearance of an image or to convert the image to a form better suited for analysis by a human or machine [6]. Meanwhile, the term image enhancement is mean as the improvement of an image appearance by increasing dominance of some features or by decreasing ambiguity between different regions of the image[7,13]. Some enhancement techniques are shown in figure1.

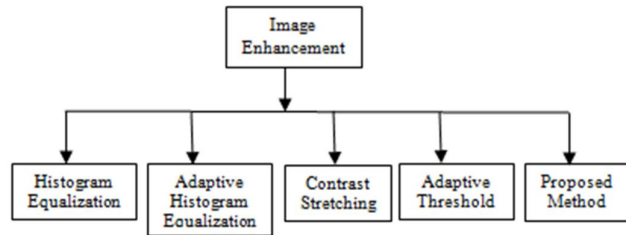


Fig. 1 Different Types of Image Enhancement Techniques.

Contrast stretching is the image enhancement technique that commonly used for digital images. Till now contrast stretching process plays an important role in enhancing the quality and contrast of medical images [10, 11]. This study proposes 5 techniques for contrast enhancement based on local contrast, global contrast, partial contrast, bright and dark contrast.

A. Contrast Stretching Technique

The contrast of an image is the distribution of its dark and light pixels. A low-contrast image exhibits small differences between its light and dark pixel values. The histogram of a low-contrast image is narrow. Since the human eye is sensitive to contrast rather than absolute pixel intensities, a perceptually better image could be obtained by stretching the histogram of an image so that the full dynamic range of the image is filled.

The basic idea behind contrast stretching [5] is to linearly increase or decrease the contrast of the given image. This can be done by specifying the input/output relationship. For example, observe the following input/output relationship shown in figure 5 below. In this figure the intensities of the pixel have been normalized from 0(black) to 1(White). Input image intensity (x-axis) is denoted by 'r' while output image intensity (y-axis) is denoted by's'.

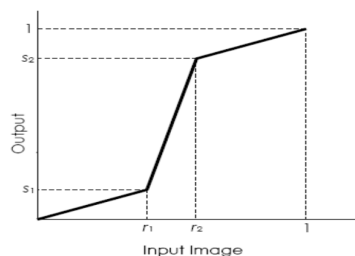


Fig. 2 Pixel Intensities

In this figure 2, small dynamic range input intensity (as represented by the difference between r_2 and r_1) is being mapped to a wider dynamic range at the output image (as represented by the difference between s_2 and s_1). Thus, one can see that the transformation function has stretched the contrast of the input image. In this manner, one can see that

some of the darker or black pixels are mapped to brighter pixels.

A few observations that are made from the mapping function [5] are given below:

1. If s_1 equals to r_1 and s_2 equals to r_2 , then output image will be exactly identical to the input image. In this case there is no change in the contrast between the output and input image.
2. If $s_1 = 0$, $s_2 = 1$, and $r_1 = r_2$ then output image will consist of only black (0) and white (1) pixels. This function is known as the binarizing function.
3. If $r_1 > s_1$ and $r_2 < s_2$ (as shown in figure 4), then all pixels in between r_1 and r_2 of the input image will be stretched between the pixels s_1 and s_2 of the output image. Pixels less than r_1 in the input image will be darker in the output image and pixels greater than r_2 in the output image will appear brighter in the output image.
4. If $r_1 < s_1$ and $r_2 > s_2$, then all pixels in between r_1 and r_2 of the input image will be compressed in between pixels s_1 and s_2 of the output image. Pixels less than r_1 (dark pixels) in the input image will be brighter in the output image and pixels greater than r_2 (bright pixels) in the output image will appear darker in the output image.

B. Adaptive Threshold Method

Thresholding is called adaptive thresholding when different thresholds are used for different regions in the image [6,14]. This may also be known as local or dynamic thresholding. The local mean $m(x, y)$ and standard deviation $s(x, y)$ adapt the value of the threshold according to the contrast in the local neighborhood of the pixel. When there is high contrast in some region of the image, $s(x, y) \sim R$ which results in $t(x, y) \sim m(x, y)$. the result is same as that of Niblack's method. However, the difference comes in when the contrast in the local neighborhood is quite low. In that case the threshold $t(x, y)$ goes below the mean value thereby successfully removing the relatively dark regions of the background. The parameter k controls the value of the threshold in the local window such that the higher the value of k , the lower the threshold from the local mean $m(x, y)$.

III. PROPOSED ENHANCEMENT TECHNIQUES FOR KNEE IMAGES

The proposed knee image enhancement technique consists of the following 4 steps

- a)The knee images are acquired directly by digital equipments.
- b)The obtained images are saved by .dcm
- c)Convert the knee image into grayscale image
- d) Finally the proposed technique is processed towards the grayscale image .

Fig. 3 Proposed Enhancement method for knee image

The above figure 3 shows the proposed approach for knee image enhancement. Contrast stretching is normalization technique, aims to improve the image through stretching the range of intensity values. Those intensity values are rescaled usually through the analysis image histogram. Generally contrast stretching is employed when the gray level distribution is narrow, due to poor illumination, lack of dynamic range in image sensor. The technique aims to adjust histogram to achieve the higher separation between foreground and background gray level distribution. However it is difficult to remove noise when gray levels are similar to object. So, in contrast stretching the image intensity is adjusted and the enhanced image is obtained which is noisy and the details of object in images are not well clearly.

To separate the objects from image the foreground and background separation is done to extract the objects. Thresholding is a basic and frequently applied technique for gray level image separation. In the gray level of regions the image are distinguishable from the background. The enhanced image obtained after intensity adjustment can be threshold in order to obtain selected features of interest from the background. Threshold is implemented in frequency domain.

IV. EXPERIMENTAL SET UP AND RESULTS

The experiments are conducted using matlab 7.1. Knee images are taken as benchmark images. To test the accuracy of the filtering algorithms, four steps are followed.

- i) First, an uncorrupted Knee image is taken as input.
- ii) Secondly speckle noise and Gaussian noise is added alternatively to a knee image.
- iii) Thirdly, filtering algorithm is applied to noisy image.
- iv) Fourth, the performance evaluation is estimated based on the parameters PSNR, MSE, UQI, Energy .

The reconstruction of an image has the dimensions of 256 pixel intensity. Most of the images used are knee images with different shapes. Normally the value of PSNR, Energy & UQI must be high which produces good quality image. Whereas the MSE and ET value must be low value to act as a good algorithm.

A. Peak Signal To Noise Ratio

The PSNR is defined in logarithmic scale, in dB. It is the ratio of peak signal power to noise power. Since the MSE represents the noise power and the peak signal power, it is unity in case of normalized image signal. The image metric PSNR is defined as:

$$PSNR = 10 \log_{10} \left(\frac{MAX_I^2}{MSE} \right) \quad (1)$$

Table I
PARAMETER EVALUATION USING ENHANCEMENT METHOD

PARAMETER	MSE	PSNR	UQI
HIST	13.4696	42.8749	0.4793
AHIST	4.1386	47.9998	0.889
CS	254.9805	30.1033	0.5267
AT	255	30.1030	-3.2638

The above table 1 shows the parameter evaluation using enhancement method. The proposed method gives suitable results on the basis of PSNR, MSE, UQI.

B. Mean Square Error

The MSE is defined as

$$MSE = \frac{1}{mn} \sum_{i=0}^{m-1} \sum_{j=0}^{n-1} ||I(i,j) - K(i,j)||^2 \quad (2)$$

For two m×n monochrome images I and K, one of the images is considered a noisy approximation of the other.

The MSE value must be low for a better image. The proposed method gives suitable results by producing low MSE value.

C. UQI

UQI measures image similarity across distortion types. Distortions in UQI are measured as a combination of three factors; Loss of correlation, Luminance distortion and Contrast distortion. Let {xi} and {yi} =1,2,...,N be the original and the test image signals, respectively. The universal quality index [] is defined as

$$UQI = \frac{4\sigma_{xy}\bar{x}\bar{y}}{[\sigma_x^2 + \sigma_y^2][(\bar{x})^2 + (\bar{y})^2]} \quad (3)$$

Where

$$\begin{aligned} \bar{X} &= \frac{1}{N} \sum_{i=1}^N X_i, \quad \bar{Y} = \frac{1}{N} \sum_{i=1}^N Y_i, \\ \sigma_x^2 &= \frac{1}{N-1} \sum_{i=1}^N (x_i - \bar{x})^2, \\ \sigma_y^2 &= \frac{1}{N-1} \sum_{i=1}^N (y_i - \bar{y})^2, \\ \sigma_{xy} &= \frac{1}{N-1} \sum_{i=1}^N (x_i - \bar{x})(y_i - \bar{y}) \end{aligned}$$

The dynamic range of UQI is [-1,1]. The best value 1 is achieved if and only if yi=xi for all i=1,2,...,N. The lowest value if -1 occurs when yi=2 x -xi for all i=1,2,...,N.

simultaneously adjusts contrast and enhances boundaries is presented. Experimental results shows the proposed method gives suitable results when compared to other traditional method taken for study.

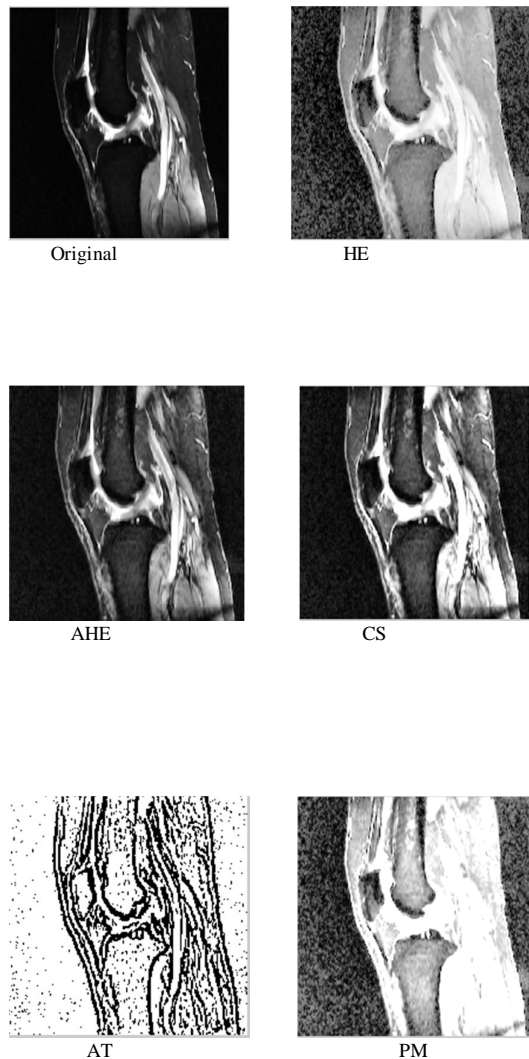


Fig. 4 Image results for different Enhancement Methods.

V. CONCLUSION

This paper focused on the preprocessing step of MRI Knee Images. Knee images normally changes to blurred images by the presence of noise and low or high contrast both in the edge area and image area. Preprocessing an image include removal of noise, edge or boundary enhancement, automatic edge detection, automatic contrast adjustment and segmentation. As multiple noise damages the quality of nature images, improved enhancement technique is required for improving the contrast stretch in knee images The image enhancement is an important step discussed. In this paper, an approach that

REFERENCES

- [1] M. Sepasian, W. Balachandran and C. Mares, "Image Enhancement for Fingerprint Minutiae-Based Algorithms Using CLAHE, Standard Deviation Analysis and Sliding Neighborhood", Proceedings of the World Congress on Engineering and Computer Science 2008 WCECS 2008, October 22 - 24, 2008, San Francisco, USA.
- [2] Zhixin Shi , Srirangaraj Setlur , Venu Govindaraju, "Digital Enhancement of Palm Leaf Manuscript Images using Normalization Techniques", IEEE conference, Computer Vision, Graphics & Image Processing, 2008, P.687-692.
- [3] Manpreet Kaur, Jasdeep Kaur, Jappreet Kaur, "Survey of Contrast Enhancement Techniques based on Histogram Equalization", (IJACSA) International Journal of Advanced Computer Science and Applications, Vol. 2, No. 7, 2011, P.138-141.
- [4] David Menotti, Laurent Najman, Jacques Facon, and Arnaldo de A. Araújo, "Multi-Histogram Equalization Methods for Contrast Enhancement and Brightness Preserving", IEEE Transactions on Consumer Electronics, Vol. 53, No. 3, 2007, P.1186-1193.
- [5] R.Sharmila, R. Uma, "A New Approach To Image Contrast Enhancement using Weighted Threshold Histogram Equalization with Improved Switching Median Filter", International Journal Of Advanced Engineering Sciences and Technologies Vol No. 7, No. 2, 2011, P. 206 – 211.
- [6] Tarek A. Mahmoud, Stephen Marshall, "Medical Image Enhancement Using Threshold Decomposition Driven Adaptive Morphological Filter", 16th European Signal Processing Conference (EUSIPCO 2008), EURASIP, 2008,
- [7] Raman Maini and Himanshu Aggarwal, "A Comprehensive Review of Image Enhancement Techniques", Journal of Computing, Vol.2, No. 3, 2010, P.8-13.
- [8] Zhou Wang, Alan.C. Bovik, "A Universal Quality Index", IEEE Signal Processing Letters, Vol. 20, 2002, P. 1-4.
- [9] H.D. Cheng, Huijuan Xu, "A novel fuzzy logic approach to contrast enhancement", Pattern Recognition, Vol. 33, 2000, P.809-819.
- [10] J. Najeer Ahamed, V. Rajamani, "Design of Hybrid Filter for Denoising Images Using Fuzzy Network and Edge Detecting", American Journal of Scientific Research. No.3,2009, P.5-14.
- [11] Sonia Goyal, Seema, "Region Based Contrast Limited Adaptive HE with Additive Gradient for Contrast Enhancement of Medical Images (MRI)", International Journal of Soft Computing and Engineering (IJSCE), Vol.1, No.4, 2011, P.154-157.
- [12] Muthu Selvi, Roselin and Dr.Kavitha, "A Hybrid Image Enhancement Technique for Noisy Di Dim Images Using Curvelet and Morphology", International Journal of Engineering Science and Technology, Vol. 2, No.7, 2010, P. 2997-3002 .
- [13] Jayamala K. Patil , Raj Kumar, "Advances In Image Processing For Detection Of Plant Diseases", Journal of Advanced Bioinformatics Applications and Research, Vol 2, No.2, 2011, P. 135-141.
- [14] Mehmet Sezgin, Bulent Sankur, "Survey over image thresholding techniques and quantitative performance evaluation", Journal of Electronic Imaging, Vol.13, No.1, 2004, P.146-165.